

13. SYSTEM PARAMETERS

System parameters allow you to customize the NoteCards environment to your particular needs and tastes.

This chapter explains:

How to set system parameters.

What each system parameter does.

Accessing System Parameters

System parameters are set from the "NoteCards Parameters" menu. To access this menu, hold the left mouse button down on the **Other** option on the MenuBox Icon. When the "Other Ops" menu comes up, still holding the mouse button down, slide off and select the **Edit Parameters** option. At this point, you release the mouse button. You can also execute a single rapid left-button click on the Other menu option and the "Other Ops" menu will come up and stay up. To select the option you want click on it.

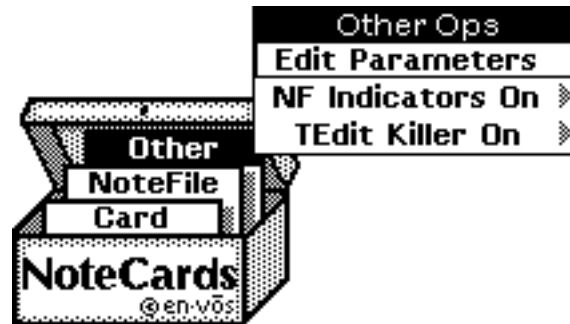


Figure 13-1. The MenuBox Icon with the **Edit Parameters** option on the **Other** menu option selected.

This action brings up the "NoteCards Parameters" permanent menu, shown below in Figure 13-2.

Each parameter is preset to a default value. Placing the cursor over the name of the parameter and depressing the left mouse button will toggle the value, listed to the right, between "Yes" and "No" if binary, and allow selection from an appropriate menu otherwise.

NoteCards Parameters	
NoteCards System Parameters	
Extra TEdit Props	None
Include Card Object In ShowInfo	No
Del TEdit Process When Shrinking	No
Fonts	
Menu Font	(HELVETICA 10 BOLD)
Default Font	(HELVETICA 12 STANDARD)
Link Icon Font	(HELVETICA 10 BOLD)
NoteFile Indicator Font	(HELVETICA 10 BOLD)
NoteFiles	
Show NoteFile On Cards	Yes
New NoteFile Initial Size	1000
Menu Lingers After NoteFile Close	Yes
Show Table of Contenes on Open	Yes
Cards	
Force Filing	Yes
Force Titles	No
Default Card Type	Text
Close Cards Off Screen	No
Bring Up Cards At Previous Pos	No
FileBox Cards	
Markers In FileBoxes	Yes
Alphabetized FileBox Children	No
Browser Cards	
Special Browser Specs	No
Arrow Heads In Browsers	None
Link Dashing In Browsers	No
Sketch Cards	
Attach Sketch Menu	No
Links	
Link Icon Border Width	1
Link Icon Multi Line Mode	No
Link Icon Max Width In Pixels	1024
Cross File Link Mode	ASK
Link Icon Show Title Default	Yes
Link Icon Attach Bitmap Default	Yes
Link Icon Show Link Type Default	No
Use Deleted Link Icon Indicators	Yes

Figure 13-2. The "NoteCards Parameters" menu.

NoteCards System Parameters

Extra TEdit Props

Does not initially appear on the list of parameters for the user version of NoteCards. It is obtained by going into the **Low Level Tools** option on the background menu. This parameter is to be used by people extending the NoteCards environment. Users of NoteCards should not add this parameter to their "NoteCards Parameters" menu.

The value of this parameter is a property list that is appended to the property list passed as the PROPS argument to every call to TEdit. This parameter allows you to set up the initial TEdit props for all new text-based cards.

Selecting this property brings up a type-in window above the parameter editor window. To set the parameter value, type in a sequence of zero or more attribute/value pairs followed by carriage return. The possibilities for attributes and values are described in *A User's Guide to TEdit*, Chapter 8, The Programmer's Interface to Tedit, in the section "Using the Top-level TEdit function".

For example, to set the default line leading to 2 you would type:

```
PARALOOKS (LINELEADING 2)
```

You should be very careful when setting other than LOOKS-related properties. In particular, NoteCards sets properties like QUITFN and PROMPTWINDOW itself, overriding any alternative values for these properties that you may have typed in.

Special note: If for some reason, you need to have an expression EVAL'ed in the typein window, precede it with ctrl-y.

The default value is "None."

Include Card Object In ShowInfo

When the value of this parameter is Yes, the Show Info inspector will include the Card Object. This option is for people extending or modifying the NoteCards system.

The default value is "No."

Del TEdit Process When Shrinking

If the value of this parameter is "Yes," when you shrink any text-based card, NoteCards will kill the TEdit process behind it. If the value is "No," the TEdit process remains running even when the card is shrunk to an icon.

Expanding an icon for a card whose TEdit process has been killed will not automatically restart the TEdit process. Instead, the user has to click the MIDDLE button in the substance of the card, and select the **New Edit Process** item from the singleton menu that appears.

Running TEdit processes use up limited resources. As a result, only about 25 to 30 TEdit processes can be active simultaneously. Setting the value of this parameter to "Yes," eliminates

unnecessary use of these limited resources when text-based cards are shrunk to icons. The cost is the extra effort needed to restart the process when the card is expanded.

The default value is "No."

Font Parameters

When you select any of the parameters in the Fonts section the system displays the "Please select a font:" menu.

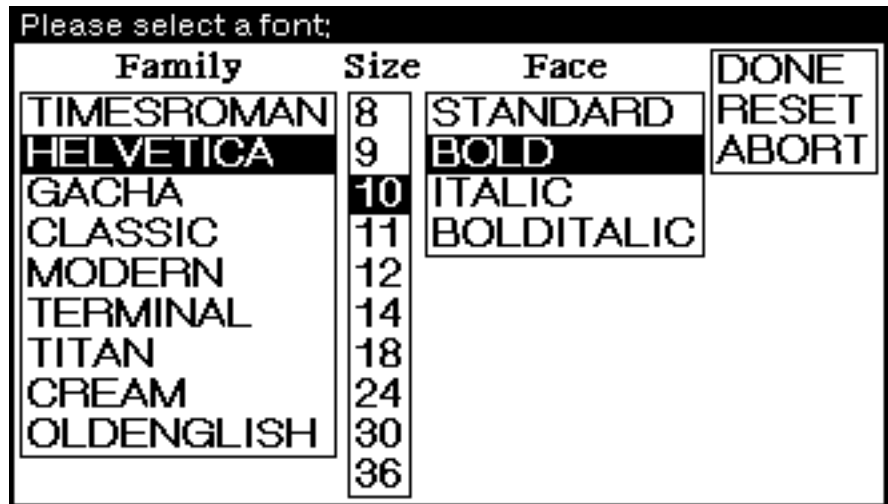


Figure 13-3. The "Please select a font" menu.

To change the link icon font, select the values you want for each of the parameters with the mouse and click on **DONE**. **RESET** returns the values to their original settings. **ABORT** returns the values to their original settings and exits.

The value for each font parameter is three-element list which includes the font family, the font size in points and the font face.

Menu Font

The value of this parameter is a description of the font in which the text in all menus will be printed.

The default value is "(HELVETICA 10 BOLD)."

Default Font

This parameter controls the font all new text-based cards will use.

The default value is "(HELVETICA 12 STANDARD)."

Link Icon Font

The value of this parameter is a description of the font which is used to print the card name and link type that appear inside the links.

The default value is "(HELVETICA 10 BOLD)."

Notefile Parameters

Show Notefile On Cards

In order to associate a card with its notefile, NoteCards provides a notefile indicator window which attaches to the top of the card's title bar.

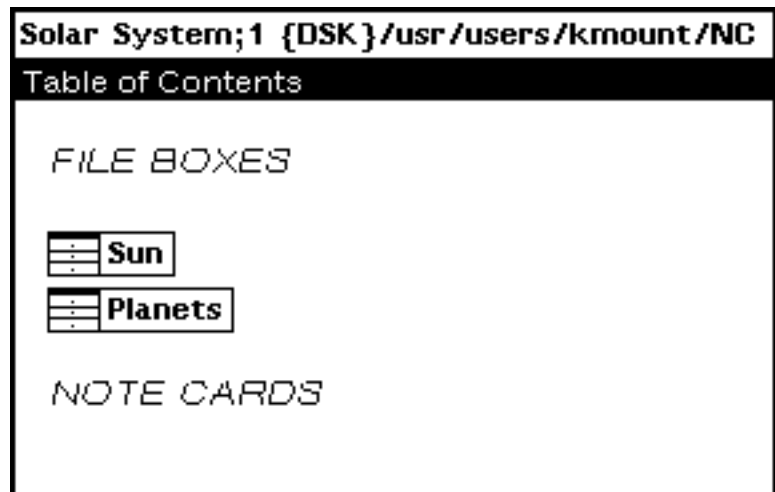


Figure 13-4. A card with its notefile indicator window attached to the top of the card.

The notefile indicator is constructed by concatenating the root file name, the version number, and the full file name. The indicator is left justified. If the card is too narrow to show the entire Indicator string, the full file name is truncated before the root name and version number as shown.

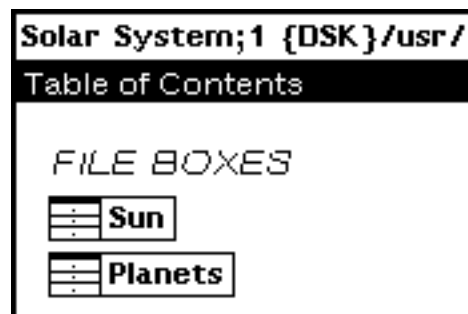


Figure 13-5. A card with its notefile indicator window attached to the top of the card, showing a truncated full file name.

If the NoteCards system parameter **Show Notefile On Cards** has the value "Yes," then a notefile indicator is attached to every card as it is brought up on the screen.

Occasionally, after you have reshaped a card, a piece of the text in the notefile indicator window will be garbled or broken. To redisplay the text in this window, place the point of the mouse cursor in the notefile indicator window, hold down the right mouse button, and select the **Redisplay** option from the window menu which pops up.

The default value is "No."

New Notefile Initial Size

When you create a new notefile, the system consults the value of this parameter to determine the initial size of the notefile index. The notefile-index size is equal to the number of cards the notefile can hold. Larger notefiles take a little longer to create. Notefiles can be enlarged later on, using the **Inspect & Repair** option.

The default value is "1000."

Menu Lingers After Notefile Close

If the value of this parameter is "No," the notefile Banner is removed from the screen when the notefile is closed. If the value is set to "Yes," then the Banner remains on the screen with its menu items greyed.

The default value is "Yes."

Card Parameters

Force Filing

If you set **Force Filing** to "Yes," the system will require you to file every card in a FileBox before the card can be closed. Setting the value to "No" eliminates this forced filing, but the system will file the card in the "To Be Filed" FileBox if the card has no parent FileBox when you close it.

The default value is "Yes."

Force Titles

If you set **Force Titles** to "Yes," this parameter will require you to title a card before it can be closed. Setting the value to "No" eliminates forced titling. When a card is not titled, it is named "Untitled" by default. This may cause confusion if several cards are left untitled. The system, however, has a unique identifier for each card and will continue to regard them as unambiguous entities.

The default value is "Yes."

Default Card Type

When you select **the New Cards** option from the notefile Banner with the left mouse button, a card of the default type is immediately created and displayed. This parameter allows you to change this default to suit your needs. Select the new default card type from the list of choices provided.

The default value is "Text."

Close Cards Off Screen

If set to "Yes," then when a card is closed, it is first moved off the screen so that the close happens invisibly.

The default value is "No."

Bring Up Cards At Previous Pos

If set to "Yes," cards are brought up on the screen in the position they occupied when you last closed them. You are not asked to position a frame image.

The default value is "No."

FileBox Card Parameters

Markers In FileBoxes

If set to "Yes," then new fileboxes will contain the markers "FILE BOXES" and "NOTE CARDS." New child boxes are inserted under the FILE BOXES marker and new child cards under the NOTE CARDS marker. If set to "No," then new fileboxes come up without markers and new children are inserted at the current cursor position . Note that regardless of the **Markers In FileBoxes** setting, if a filebox has no markers (because you've deleted them) then new children are inserted at the cursor position.

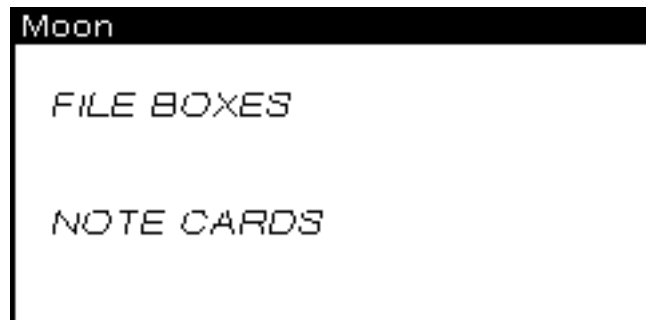


Figure 13-6. A FileBox card showing the markers "FILE BOXES" and "NOTE CARDS."

The default value is "Yes."

Alphabetized FileBox Children

If set to "Yes," then FileBoxes created while this parameter is set to "Yes" will automatically alphabetize any new cards filed in them.

The default value is "No."

Browser Card Parameters

Special Browser Specs

If set to "Yes", this parameter causes a sequence of five prompts to appear above the Browser NoteCard during the Browser creation process. These prompts mainly concern the node-link graph properties documented in the "Browser Cards" section of Chapter 11, System Cards.

For example, this option may be used to create a vertical browser instead of the default horizontal presentation. Note that a carriage return given as a response to any of the prompts will cause the Special Browser Spec to retain its default value.

The default value is "No."

Arrow Heads In Browsers

This dictates whether arrow heads are drawn on browser links. The variable can be set to either AtMidpoint, AtEndpoint, or None. See the Browser card section of Chapter 11, System Cards for details.

The default value is "None."

Link Dashing In Browser

If set to "Yes", this parameter builds a Browser with dashed links. Each link in a Browser refers to the type of link being followed. With link dashing, each link included in the Browser is assigned a different style of dashing (up to six styles). A "No" setting means links will be presented as solid lines in a Browser. A Browser with link dashing will take a little longer to create than one with solid lines.

There may be problems printing Browsers with dashed lines.

The default value is "No."

Sketch Card Parameters

Attach Sketch Menu

If set to "Yes," the Sketch menu is automatically attached to the right-hand side of each Sketch card when it is opened.

The default value is "No."

Link Parameters

Link Icon Border Width

Changes the border size of a link icon.



Figure 13-7. A link icon with a border size of 3.

The link icon border width can also be set to zero for link icons that blend more smoothly with text.

This is a  **Link Icon** with no border.

Figure 13-8. A link icon with a border size of 0.

The default value is "1."

Link Icon Multi Line Mode

This parameter works in conjunction with **Link Icon Max Width in Pixels**. Multi line mode determines whether the link icon will allow multiple text lines or whether all the text will be forced to appear on a single line. If **Link Icon Multi Line Mode** is set to "Yes," all link icons will display in multiple lines, with each line fitting within the width specified by **Link Icon Max Width in Pixels**. Line breaks occur at word boundaries.

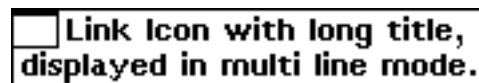


Figure 13-9. A link icon in multi line mode.

The default value is "No."

Cross File Link Mode

All links in NoteCards are bidirectional or two-way with one possible exception. When you are creating cross-file links, these links can be unidirectional or one-way. A one-way link means that a source card contains a to-link pointing to the destination card, but the destination card does not contain a corresponding from-link pointing back to the source card. This allows you to update a source-card file without being forced to open any corresponding destination-card files.

- One-Way** Creates unidirectional links between cards in different notefiles.
- Two-Way** Creates the usual bidirectional links between cards in different notefiles.
- Ask** The system asks you whether you want One-Way or Two-Way links each time you create a cross-file link.
- The default value is "Ask."

Link Icon Max Width in Pixels

Sets the maximum width in pixels of a link icon. This value includes the card-type bitmap, if it is displayed. All links are truncated at the width specified by this parameter.



Figure 13-10. A truncated link icon in single line mode.

The default value is "1024" pixels.

Link Icon Show Title Default

This parameter and the following two determine the manner in which link icons are displayed if these parameters are not currently specified in the icon. Which is to say, if the link icon display mode values are set to "System Default."

If the title field in a link icon is set to "System Default" then the **Link Icon Show Title Default** parameter is consulted to determine whether the title will be shown inside the link icon. If it is set to "Yes" then the title will be shown.

The default value is "Yes."

Link Icon Attach Bitmap Default

If the bitmap field in a link icon is set to "System Default" then the **Link Icon Attach Bitmap Default** parameter is consulted to determine whether the card-type bitmap is shown next to the link icon. If it is set to "Yes" then the card-type bitmap is shown.

The default value is "Yes."

Link Icon Show Link Type Default

If the link type field in a link icon is set to "System Default" then the **Link Icon Show Link Type Default** parameter is consulted to determine whether the link type will be shown inside the link icon. If it is set to "Yes" then the link type will be shown.

The default value is "No."

Use Deleted Link Icon Indicators



If the value of this parameter is "Yes," when you delete a card, all link icons which point to that card are replaced with a deleted icon.

Deleted

Figure 13-11. A deleted icon.

If the value of this parameter is "No," the links to the card are simply removed, leaving no trace behind.

Delete icons are useful when you may be deleting cards where you have link icons pointing to them and these link icons are referred to in the text.

Eg. "This link  takes you to the next card in the sequence." If the "Next" card were subsequently deleted with this parameter set to "Yes," this would become, "This link  takes you to the next card in the sequence." If this parameter were set to "No," the sentence would become the following more obscure version, "This link takes you to the next card in the sequence." with no visible link.

The default value is "Yes."

[This page intentionally left blank]