
SETDEFAULTPRINTER

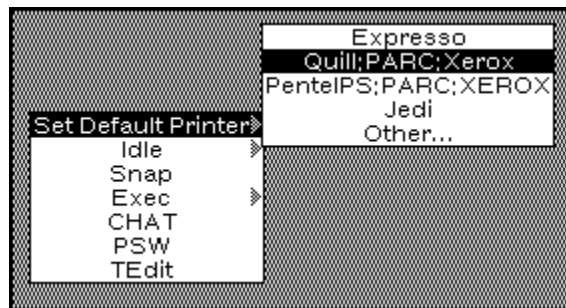
By: Nick Briggs (Briggs.pa@Xerox.com)

The SETDEFAULTPRINTER module provides a (cleaner) mechanism for moving printer names around on your DEFAULTPRINTINGHOST list. There are no user callable functions. Access to the features of the module are through the Background menu. This module uses the DEFAULTSUBITEMFN module which redefines the DEFAULTSUBITEMFN used in menus to accept an expanded form for menu subitems.

Set Default Printer

[Background Menu Entry]

Selecting the "Set Default Printer" item off the background menu will prompt you for a new default printer, which will be added at the beginning of the DEFAULTPRINTINGHOST list. If you roll-out into the subitems for Set Default Printer it will present a submenu with the entries on DEFAULTPRINTINGHOST, and an "Other..." item. Selecting one of the printer name entries will cause it to be moved to the front of DEFAULTPRINTINGHOST, selecting "Other..." will prompt for the name of a printer in the same manner as selecting the "Set Default Printer" top level item off the background menu. If any commentary information has been supplied (see below) holding the mouse over the printer name will display the information in the prompt window.



SDP.PRINTERINFO

[Variable]

The variable SDP.PRINTERINFO is an A-list which will be used to lookup commentary information about a printer to be included as the "help" in the menu subitems. The UPPERCASE name of the printer is used as a key. An example SDP.PRINTERINFO setting might be

```
((QUAKE . "Press, Rm 1532") (PENTELPS:PARC:XEROX . "Interpress, Rm 1532"))
```

LOCATION

[Property]

The code that looks up the commentary information about a printer will also check for a LOCATION property on the UPPERCASE atom which is the printrname if no entry is found on SDP.PRINTERINFO. For example

```
(PUTPROP 'JEDI 'LOCATION "FullPress, Pod 5, 2nd floor")
```

Would describe the location of printer Jedi.