

READAPPLEFONT

By: Christopher Lane (Lane@Sumex-Aim.Stanford.Edu)

Uses: READDISPLAYFONT

READAPPLEFONT defines a new display font type which allows Envos Lisp to use (commercially available) Macintosh™ display fonts. Although this module is primarily intended for extracting font width information for conversion programs (eg. MacPaint™ to Sketch and vice versa) it can also be used to extend the number of display fonts available within the Envos Lisp environment.

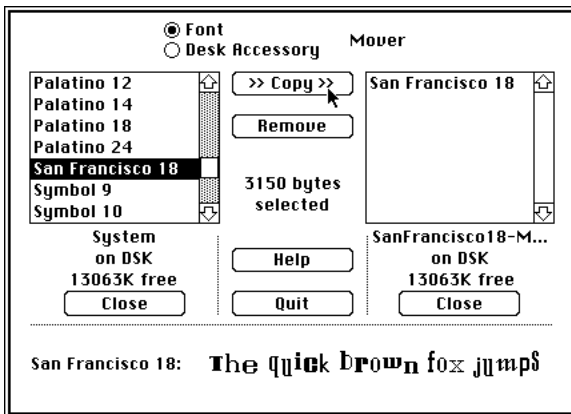
There are *no* user functions in the module. In addition to this module, you need a directory of extracted Macintosh™ font files (as described below) and you must add the name of that directory to the system DISPLAYFONTDIRECTORIES list. The following function is added under the type APPLE to the list DISPLAYFONTTYPES (defined by the READDISPLAYFONT module).

(READAPPLEFONT STREAM FAMILY SIZE FACE) [Function]

The module also adds the extension *APPLE* to the system list DISPLAYFONTEXTENSIONS.

FONT FILES

This module only uses the FontRec portion of the font files (see *Inside Macintosh™*). The font resources must be extracted into individual files with appropriate names, eg. SANFRANCISCO18-MRR-C0.APPLE. One method of doing this is to use the *Font/DA Mover™* utility:



The individual font files should be moved to Unix AUFS/CAP server (or the equivalent) and the resource forks (in the .resource directory) should be copied to the directory you added to DISPLAYFONTDIRECTORIES above.

a
d
)

If another method for extracting the FontRec data structure into individual files is used, the following variable will probably need to be reset:

APPLEFONTREC.OFFSET [Variable]

The offset in bytes into the font file of where the FontRec data structure begins (initially 264).

NOTES

- This module only handles proportionally spaced fonts and ignores fractional character widths.
- The user is responsible for determining the legality of extracting the fonts in question.